

## Quick Start



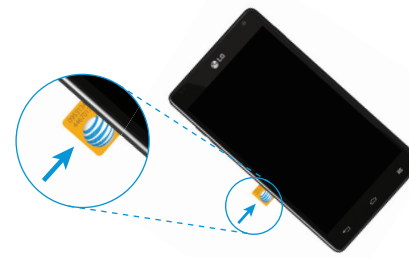
### Get to Know Your Phone



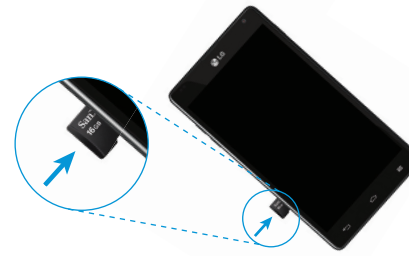
### Set Up Your Phone

#### Install the MicroSIM and microSD Cards

- With your phone off, lift up the slot cover on the side of the phone.
- Slide the microSIM card into its slot with the gold contacts facing downward.



- With the gold contacts facing downward, slide the microSD card into its slot.



- Replace the slot cover.

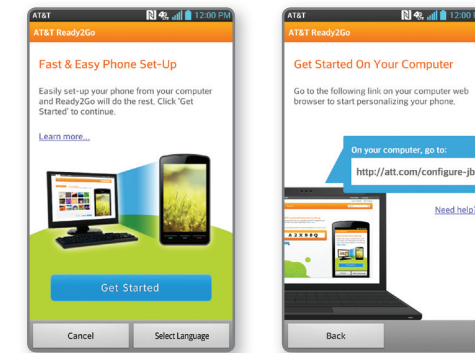
### AT&T Ready2Go

Ready2Go helps you set up your device by using your computer.

- Configure email, contacts, and Wi-Fi®.
- Customize your home screen, wallpaper, ringtones, and more.

#### Get Started

- When your phone first starts up, you'll see the AT&T Ready2Go wizard.
- Touch **Get Started**. You will see a web address and code.
- On your computer's browser, go to the web page.
- Complete the steps to send personalization to your phone.
- Enter the code from your phone on the web page.
- On your phone, touch **Finish**.



Note: To skip the wizard and update later, tap **Cancel** at the bottom of the screen. To return to the wizard from the home screen, tap **Apps** > **AT&T Ready2Go** and follow the steps above.

### Customize Home Screens

#### Add a Home Screen

- Pinch your fingers together on a home screen to enter Canvas view.
- Touch a screen with **+** to add a home screen.

#### Customize a Home Screen

- Touch **+** on a home screen and choose a category:
  - Apps:** Add applications from the application launcher.
  - Downloads:** Add downloaded applications.
  - Widgets:** Add shortcuts and dynamically updating widgets.
  - Wallpapers:** Change your home screen wallpaper.
- To move an item, press and hold it and drag it to a new location. To delete it, drag it to **Remove**.



BC

Note: For more information on your device, visit [att.com/DeviceHowTo](http://att.com/DeviceHowTo).

### Find More Information

**On The Web:** Interactive web tutorials are available at [att.com/Tutorials](http://att.com/Tutorials) or click on the bookmark in the browser. Select Manufacturer: **LG** and Model: **Optimus G** from the drop-down menus. Detailed support information including device specifications, user manual, troubleshooting, user forums, and knowledgebase articles are available at [att.com/DeviceSupport](http://att.com/DeviceSupport). For information about your wireless account, service plan, or network, visit [att.com/Wireless](http://att.com/Wireless). Learn how to add a password on your device to protect your privacy, as well as report a lost or stolen phone at [att.com/StolenPhone](http://att.com/StolenPhone).

**On The Phone:** Call AT&T Customer Care at 1-800-331-0500 or dial 611 from any AT&T mobile phone for assistance with your service or device.

### Find Accessories

Accessories for your smartphone are available at [att.com/WirelessAccessories](http://att.com/WirelessAccessories) or visit your local AT&T store.

LG and the LG logo are registered trademarks of LG Corp. Optimus G is a trademark of LG Electronics, Inc. Google, the Google logo, Google Play, and Android are trademarks of Google Inc. microSD™ is a trademark of SanDisk. The Bluetooth® word mark and logos are registered trademarks owned by Bluetooth SIG, Inc. and any use of such marks by LG Electronics MobileComm, U.S.A., Inc. is under license. © 2013 AT&T Intellectual Property. All rights reserved. AT&T, the AT&T logo and all other AT&T marks contained herein are trademarks of AT&T Intellectual Property. All other marks contained herein are the property of their respective owners.

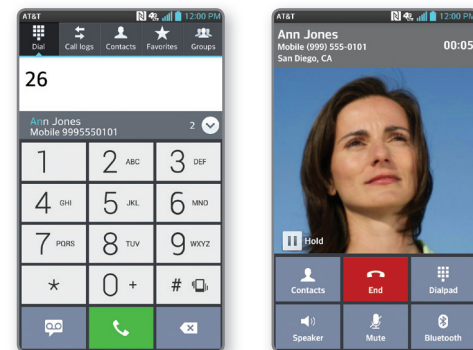
### Calling and Voicemail

#### Make a Call

- From the home screen, touch **Phone**.
- Dial the number you want to call or start spelling the name of the desired contact.
- Touch a contact and then touch **Call** to place the call.

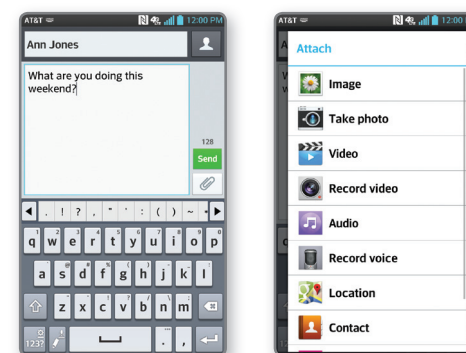
#### Access Voicemail

- From the home screen, touch **Phone**.
- Touch **Voice Mail**.
- Follow voice prompts to listen to messages.



### Text and Picture Messaging

- From the home screen, touch **Messaging**.
- Touch **Compose**.
- In the **To** field, enter a number or touch **+** to select a name from your contact list or call logs.
- Enter your message.
- Touch **Attach** to attach a file.
- Touch **Send** to send the message.



### Web Browsing

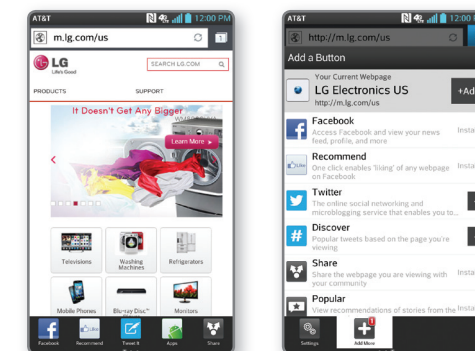
#### Browse the Web

- From the home screen, touch **Browser**.
- To enter a URL, touch the **web address bar**.
- Enter an address and touch **Go**.
- Scroll to navigate and touch links to open them. Use a pinching gesture to zoom out. Spread your fingers apart to zoom in. Press the **Menu Key** to access additional settings.
- To open a new browser tab, touch **+**.

#### Use the Browser Bar

Access Facebook® and news feeds, find relevant apps, share content, and more.

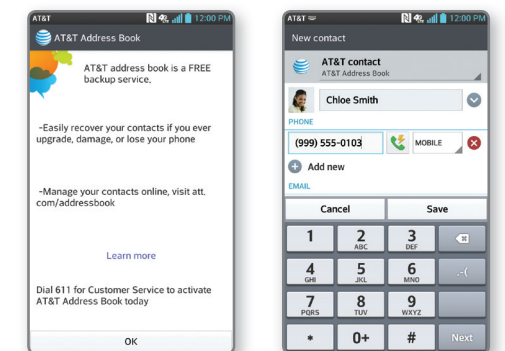
- To reveal the Browser Bar, swipe up from the bottom of the browser screen.
- To add a button, touch **Add More** and select a choice or create one of your own.
- Go to **Settings** > **Tutorial** for more information on the Browser Bar.



### Address Book

#### Create a New Contact

- From the home screen, touch **Contacts**.
- When you access your address book the first time, you may choose to sync your phone with AT&T Address Book.
- To create a new contact, touch **+**.
- Enter the contact's information. To add a field, touch **Add new**. To remove a field, touch **X**.
- Touch **Add another field** to see more categories.
- Touch **Save** to save the contact.



Please don't text and drive.  
Messaging rates apply.

## Camera and Camcorder

### Take a Picture/Record a Video

- From the home screen, touch **Camera**.
- Touch to take a photo.
- Touch to switch to the camcorder.
- Touch to start recording. To take a still shot while recording, touch.
- Touch to stop.

### Share Photos

- From the home screen, touch **Apps** > **Gallery**.
- Touch an album.
- Touch and then touch the image(s) you wish to share.
- Touch **Share**.
- Select a destination and follow the on-screen instructions.



Note: To access the front-facing camera or camcorder, touch . Touch to view and change camera/camcorder settings.

## Connectivity

### Use Bluetooth®

- From the home screen, press the **Menu Key**.
- Touch **All settings** > **Networks** > **Bluetooth**.
- If **Bluetooth** is off, touch to enable it.
- Touch **Search for devices**.
- Touch the name of the device you wish to pair with. See the *Bluetooth* device's user manual for more information on pairing.

### Connect to Wi-Fi

- From the home screen, press the **Menu Key**.
- Touch **All settings** > **Networks** > **Wi-Fi**.
- If **Wi-Fi** is off, touch to enable it.
- Touch a network name. Enter a password if required and then touch **Connect**.



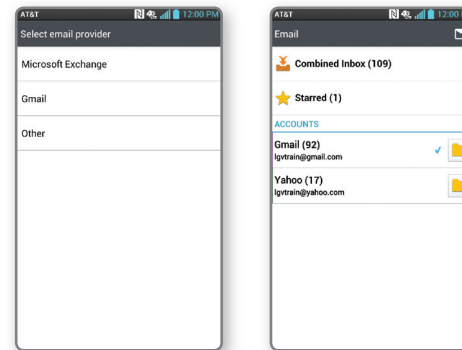
## Set Up and Send Email

### Set Up an Email Account

- From the home screen, touch **Email**.
- Touch **Microsoft Exchange**, **Gmail**, or **Other**. Contact your IT administrator to help set up your corporate Microsoft® Exchange account.
- Enter your email address and password and touch **Next**.
- Follow any additional instructions. When complete, touch **Done** to view your inbox.
- To compose an email, touch.
- Enter a recipient and other relevant information, and then touch **Send**.

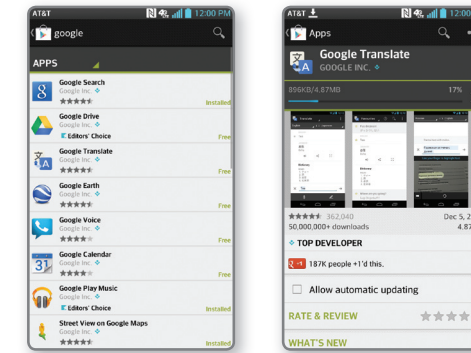
### View Combined Inbox

- From the home screen, touch **Email**.
- Press the **Menu Key** and touch **Accounts**.
- Touch **Combined Inbox** to view all emails in a single inbox.



## Download Apps with Google Play™

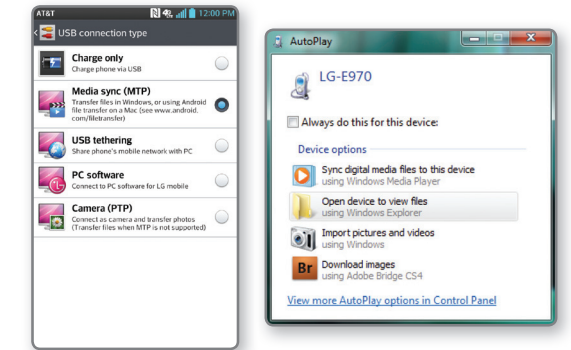
- From the home screen, touch **Apps** > **Play Store**.
- Touch a category to browse selections, or touch to search for an item. Enter a keyword and touch on the keypad.
- Touch an app and follow the on-screen installation instructions. Once the app has been downloaded and installed, you will see a notification in the Notifications Bar.



Note: To use Google Play, you must first create or sign into a Google account. To purchase a paid app, you'll need to set up a payment method with Google Wallet™.

## Transfer Multimedia

- Connect your Optimus G to your computer with a USB cable and touch **Media sync (MTP)**.
- On your PC, choose **Open device to view files** using Windows Explorer. If you are using a Mac, see [www.android.com/filetransfer](http://www.android.com/filetransfer).
- Your phone will appear as another hard drive on your computer. Click on the drive to view it.
- Drag and drop your files into the corresponding folders, such as Music, Movies, or Pictures.\*
- When you're finished transferring files, swipe down on the Notifications Bar and touch **USB connected** > **Charge only**. You may now safely unplug your device.



\*Files must be Digital Rights Management (DRM) free.

## AT&T Services

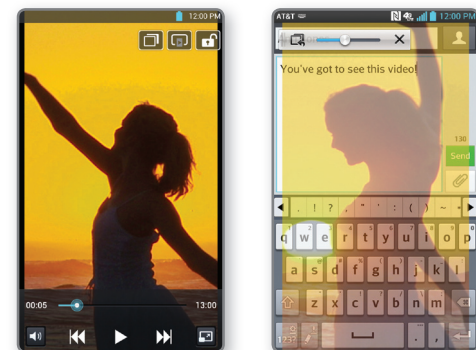
- myAT&T:** Track your usage, review and pay your bill, and update your data plan services.
- AT&T Code Scanner:** Reads UPC, QR, and Data Matrix barcodes that you find on products, in ads, or online.
- AT&T DriveMode™:** Silence notifications, set an auto-reply so people will know you're driving, and more.
- AT&T FamilyMap:** Locate a family member's wireless phone on a map from your mobile phone or PC.
- AT&T Locker™:** Safely store and share all your photos, videos, and documents.
- AT&T Navigator®:** Get voice-guided, turn-by-turn driving directions and traffic updates.
- AT&T Ready2Go:** Set up and customize your phone from your personal computer's web browser.
- AT&T Smart Wi-Fi:** Maximize your battery performance and data plan, simplify access to AT&T Hot Spots and Wi-Fi networks, automate your Wi-Fi connections, and track your data usage.
- Live TV:** Watch LIVE, on-demand, and downloadable mobile TV.
- Messages:** Manage your text messages, call history, voicemail, and more, all in one convenient place.

Data rates may apply. AT&T FamilyMap, Live TV, and AT&T Navigator require a separate subscription. Live TV requires mobile broadband service. Service not available in all areas. Programming subject to blackout restrictions. Download and watch capability available for select content, requires Wi-Fi connection, and is available for viewing for limited time periods.

## QSlide Function

The QSlide function enables an overlay on your phone's display for easy multitasking.

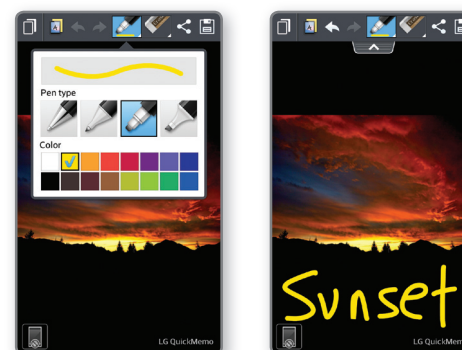
- While watching an on-device video, touch . The video continues to play as an overlay on your phone.
- Use the slider to adjust the transparency of the overlay.
- Touch **Messaging** to send a text while in QSlide mode. You can also browse the web, edit contacts, or choose other phone options.
- Touch to exit the QSlide function.



## QuickMemo™

Capture screens, draw on them, and share them with family and friends with QuickMemo.

- From any screen, press both volume keys at the same time.
- Use your fingertip to draw or write on the screen.
- Touch to change the pen type or color.
- If you make a mistake, touch to access the eraser, or touch to undo your last pen stroke.
- To overlay, touch while keeping the memo on top.
- To stop overlay and return to QuickMemo, touch.
- To save your creation, touch. Touch and follow on-screen instructions to share your memo.
- To exit QuickMemo at any time, press the **Back Key**.



Note: Memos are saved in the Gallery.

## NFC Tags and LG Tag+

### Use NFC

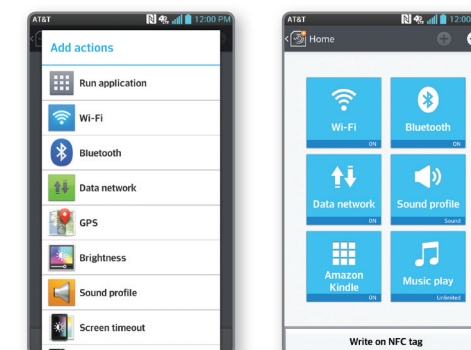
With Near Field Communication (NFC) you can instantly change your phone settings to suit your environment. Before you begin, make sure **NFC** is enabled on your phone.

- Touch the back of your phone to an NFC tag to automatically change your phone's settings.

### Use LG Tag+

LG Tag+ lets you customize NFC tags with the settings you prefer.

- From the home screen, touch **Apps** > **LG Tag+**.
- Touch +.
- Enter a name for the tag and touch **OK**.
- Touch an action to add it to the tag. Touch + or - to add or remove actions. When you're finished, touch **Write on NFC tag**.
- Hold your phone to a blank tag and then touch **OK**.



NFC tags are sold separately.

## Network Indicators

Your 4G LTE wireless device will indicate which of the AT&T wireless networks you are connected to. A network indicator does not necessarily mean that you will experience any particular upload or download data speeds.

- 4G LTE:** Connected to the AT&T 4G LTE network.
- 4G:** Connected to the AT&T HSPA+ network. The AT&T HSPA+ network is capable of delivering 4G speeds when combined with enhanced backhaul. 4G availability is increasing with ongoing backhaul deployment.

**E:** Connected to the AT&T EDGE/2G network. Actual data upload and download speeds depend on various factors, including the device, network utilization, file characteristics, terrain, etc. Learn more at: [wireless.att.com/learn/articles-resources/wireless-terms.jsp](http://wireless.att.com/learn/articles-resources/wireless-terms.jsp), your AT&T Wireless Customer Agreement, Section 3.2 "Where and How Does AT&T Service Work?" The AT&T HSPA+ network can deliver 4G speeds when combined with enhanced backhaul. Your wireless device can't distinguish between HSPA+ cell sites with enhanced backhaul and those without. Enhanced backhaul not available everywhere. Learn more at [att.com/network](http://att.com/network).

Limited 4G LTE availability in select markets. LTE is a trademark of ETSI.